



2010-2011  
ECONOMIC DEVELOPMENT ACTIVITIES/MARKETING INITIATIVES IN THE RIVER REGION

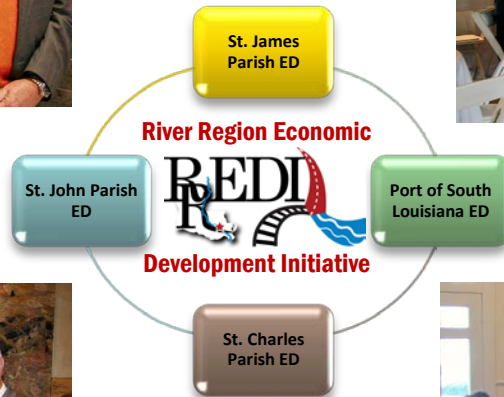
PARISH	PROJECT	FUNDED
St. Charles	Installation of New Dock/Building/Equipment & Land Acquisition	\$6,500,000 Capital Outlay
St. Charles	Land Acquisition, Planning, Engineering, Infrastructure of Public Port Facilities	\$8,275,000 Capital Outlay
St. Charles	Liquid Bulk Terminal	\$6,401,500 LDOTD Port Priority
St. John	Globalplex Dock Access Bridge & Equipment Replacement/Repair	\$2,000,000 Capital Outlay
St. John	Globalplex Terminal Building #71 Upgrade	\$2,850,000 Capital Outlay
St. John	Globalplex Rail Siding	\$1,650,000 Capital Outlay
St. John	Dock Planning & Construction	\$2,525,000 Capital Outlay

PARISH	PROJECT	FUNDED
St. John	Airport Runway Extension	\$1,775,000 Capital Outlay
St. John	Globalplex Finger Pier	\$6,000,000 LDOTD Port Priority
St. James	Plains All American	Up to \$400 million Revenue Bonds
FTZ#124	Expanded to 13 Subzones; Alternative Site Framework (ASF) approval expected soon	
LMRPWSSC	Received from Homeland Security grants in 2011	\$ 17,115,720
	Received from Homeland Security grants to present, since 2006 when the council was formed	\$ 130,474,357

### 2011 River Region Caucus



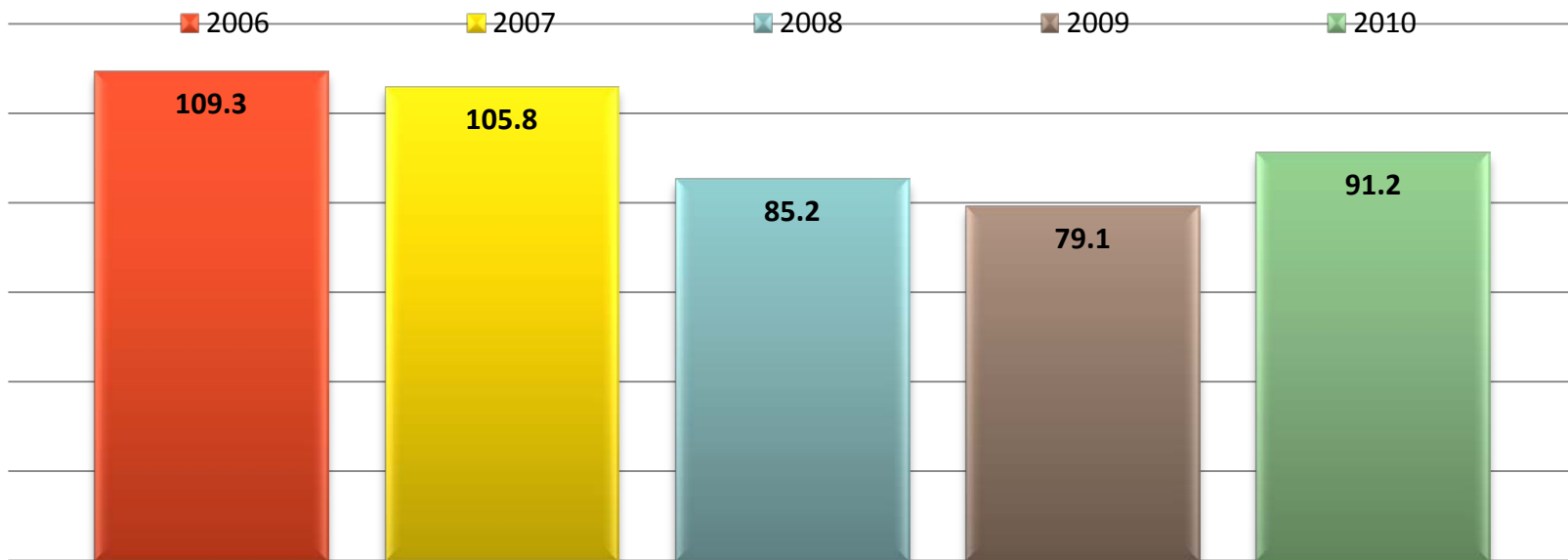
### 20th Annual Industry Appreciation



### 2011 FamTour



St. Charles Parish Facilities Total Throughput (In Million Short Tons)



Port of South Louisiana 2010 Trade (In Million Short Tons)



- Grain - 87.5
- Crude Oil - 65.6
- Petrochemicals - 45.9
- Chems/Fert - 19.2
- Ores - 11.9
- Coal/Coke - 6.2
- Steel - 5.72
- Concrete/Stone - 1.8
- Edible Oils - 1.42
- Other - 1.1
- Sugar/Prod - 0.03

Port of South Louisiana Total Throughput (In Million Short Tons)

