

Available Site Descriptions

PROPERTY NAME: Safeland Storage, LLC Map #: 14

Mile Marker: E 140.1 Acreage: 425.00 Hectares: 171.99

GENERAL DETAILS

Site Draft: Deep Draft River Frontage (in ft.): 2,133.00 Rail Frontage (in ft.): 2,013.00

AGENT DETAILS

Agent: Torri Buckles Company: St. John Parish Dept of ED Phone: 985-652-9569

TRANSPORTATION

Airport: Louis Armstrong Int'l (35 mi); Baton Rouge Metropolitan (53 mi); St. John Parish (5 mi)

Rail: CN (Onsite - 2,013.00 ft)

Highway: I-10 (15 mi); US 61 (1 mi); LA 641 (3 mi); LA 44 (Onsite)

Zoning: Industrial Adjacent Land Use: Industrial & Agricultural

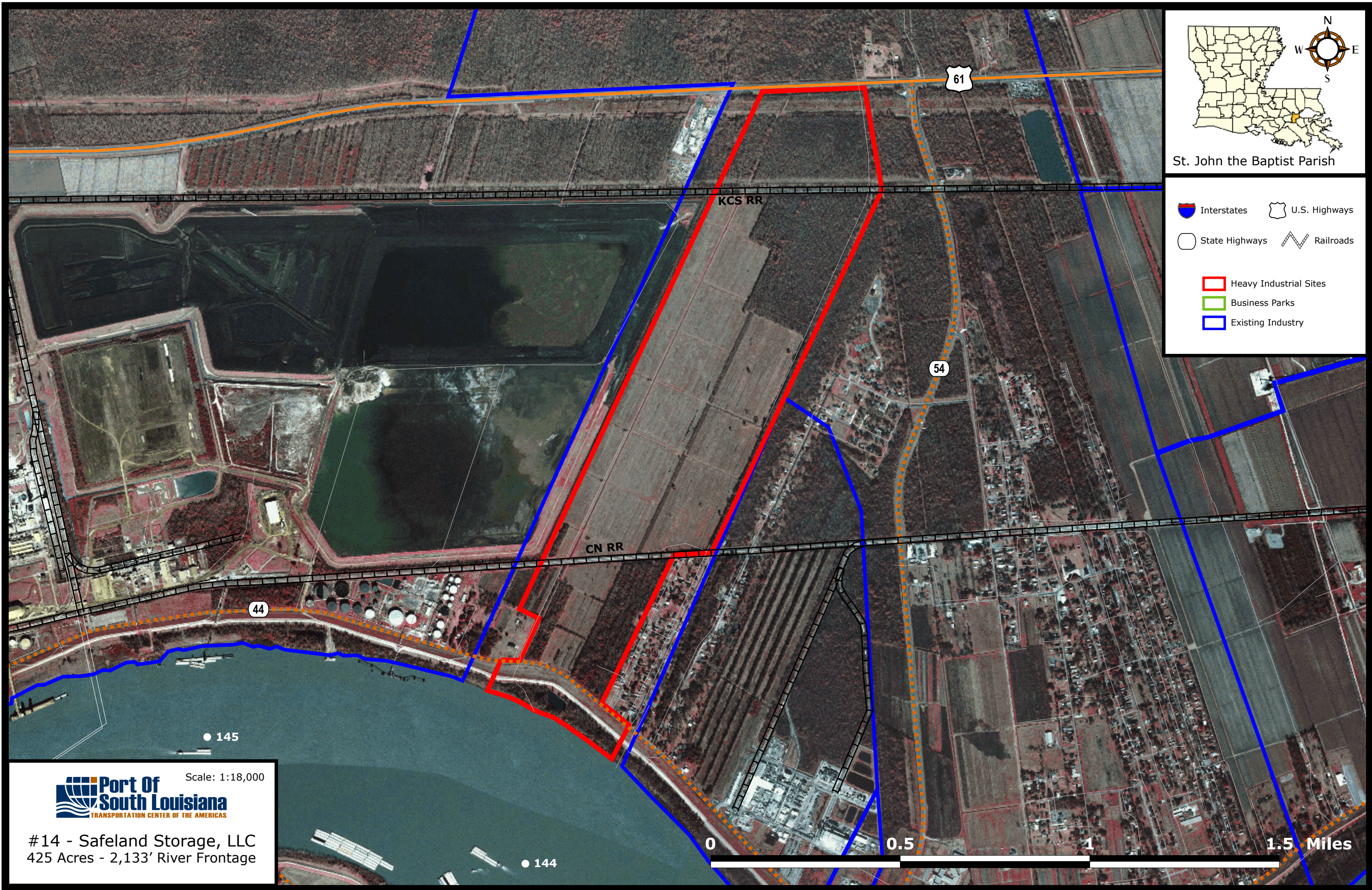
Access Road: Paved Parish: St. John the Baptist

UTILITIES








Electricity: Entergy Water: St. John the Baptist Parish Utilities

Natural Gas: Atmos Sewage: St. John the Baptist Parish Utilities

Telecommunications: AT&T



St. John the Baptist Parish

-  Interstates
-  U.S. Highways
-  State Highways
-  Railroads
-  Heavy Industrial Sites
-  Business Parks
-  Existing Industry



Scale: 1:18,000

#14 - Safeland Storage, LLC
425 Acres - 2,133' River Frontage



● 145

● 144