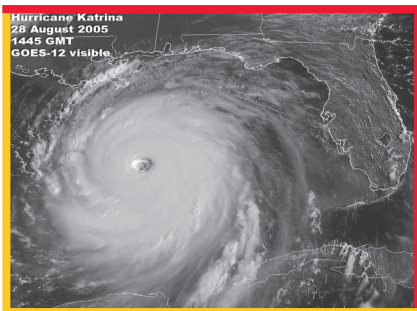




## Hurricane/Severe Weather Information

Natural disasters disrupt normal life.  
Services become unavailable.  
Transportation and mobility is hindered.  
You may even be forced to evacuate.

***BE PREPARED!***



Inside:

**EMERGENCY SUPPLIES  
CHECK-OFF LIST**

Provided by:



(888) SLA-PORT - (985) 652-9278

Emergency/Severe Weather Work Info:  
(866) 536-8300 - (985) 536-8300

# EMERGENCY SUPPLIES CHECK-OFF LIST

*It would be wise to assemble and maintain an Emergency Supplies Kit. It will enable you to respond to any situation quickly.*

## WATER

*Store enough drinking water to last for, at least, two weeks. Plan on one gallon per person per day. Store extra water for dry food preparation.*



## FOOD

*Store at least a three-day supply, preferably that which requires no refrigeration, cooking, or preparation. Below are some suggestions:*

- Canned meats, fruits, and vegetables
- Canned or dry juices, milk, and soups
- Staples, such as sugar, salt, and pepper
- High-energy foods-  
peanut butter, jelly,  
crackers, nuts, trail mix, etc.
- Comfort/stress foods -cookies,  
hard candy, sweetened cereals, etc.
- Vitamins



## FIRST AID KIT (FOR HOME & VEHICLE)

- Sterile adhesive bandages in assorted sizes
- Hypoallergenic adhesive tape
- 2" and 4" gauze pads
- Antiseptic
- Scissors



- Triangular bandages*
- Tweezers*
- 2" and 3" sterile roller bandages (3 rolls each)*
- Moistened towelettes*
- Thermometer*
- Tongue blades (2)*
- Petroleum jelly*
- Aspirin and non-aspirin pain reliever(s)*
- Antacid*
- Laxative*
- Anti-diarrhea medication*
- Safety pins (assorted sizes)*
- Cleansing-agent soap*
- Latex gloves*
- Sunscreen*
- Activated charcoal (use if advised by Poison Control Center)*



**SUPPLIES AND TOOLS**

- Emergency preparedness manual*
- Battery-powered radio and extra batteries*
- Manual can opener and utility knife*
- Small canister (A-B-C-type) fire extinguisher*
- Tube tent*
- Pliers*



- Compass*
- Tape*
- Shutoff wrench*
- Matches in water-proof container*
- Needles and thread*
- Paper and pencils*
- Small shovel*
- Medicine dropper*
- Signal flare/whistle*
- Aluminum foil*
- Plastic sheeting*



## **CLOTHING AND BEDDING**

- Sturdy shoes or boots*
- Rail gear*
- Hat and gloves*
- One blanket or sleeping bag per person*
- Thermal underwear*
- Sunglasses*



## **SANITATION**

- Toilet paper and towelettes*
- Soap and liquid detergent*
- Feminine supplies*
- Personal items: shampoo, deodorant, tooth paste, toothbrushes, comb, brush, lip balm, etc.*



**SANITATION (cont'd)**

- Plastic garbage bags and ties
- Plastic bucket with tight lid
- Chlorine bleach
- Disinfectant



**SPECIAL ITEMS**

FOR BABIES

- Baby formula
- Diapers
- Bottles
- Powdered milk
- Medications



FOR THE ELDERLY

- Heart and blood pressure medication
- Insulin
- Denture needs
- Prescription medication



**IMPORTANT DOCUMENTS**

*These documents should be kept in a waterproof container*

- Will, insurance policies, deeds, stocks, bonds, contracts
- Passports, social security cards, immunization records
- Savings and checking account numbers



- Credit card account numbers and companies
- Inventory of valuable household goods
- Family records- birth, marriage, and death certificates
- List of important telephone numbers

Store the kit in a safe, convenient place known to all family members. If possible, it should be in a cool, dry, dark location.



*Updated June 27, 2008/aph*



P.O. Box 909  
LaPlace, Louisiana 70069-0909

(985) 652-9278 phone - (985) 652-9518 fax  
[www.portsl.com](http://www.portsl.com) - [info@portsl.com](mailto:info@portsl.com)

*If you do not have pre-established plans of evacuation or if your plans change, please call*

**(866) 536-8300 or (985) 536-8300**

*to advise the Port of South Louisiana where you are and how you can be reached.*

*This information is important in order to provide employees with post-storm instructions on when and how to return to work.*